

Impression of the Wisconsin farm-tour of May 2019,

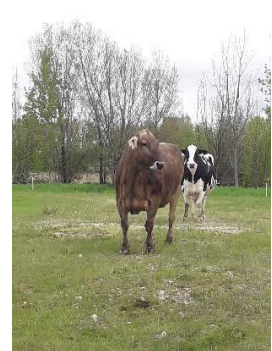
On May 26th we travelled to Chicago in The Mid-West of the United States of America. From there we have started our farm tour, to visit up to 18 interesting dairy farms, with a group of 17 persons. The group consisted of 11 entrepreneurs in the dairy industry from Ukraine and 6 from The Netherlands, where the well-experienced interpreter, Yaroslav Pankiv, has done a magnificent job to translate all detailed information for the Ukraine group.

Visited farms varied a lot in herd size, size of cultivable land, milking system and housing of cows. But the similarity of all these herds is in the notable passion for the profession of being a dairy farmer. Even despite the difficult economical circumstances over the recent years, due to low milk prices and trade barriers. There was a passion and motivation for producing high-quality food by milking cows and growing crops in a sustainable, healthy and efficient way with in most cases high quality dairy cows. So, each visited farm therefore was impressive that way, and everywhere you could find interesting aspects to think about and take home.

Hereby we would like to thank all visited farms for their enormous hospitality, and willingness to share all kinds of farm-related information. This way participants could come to a good understanding of the situation and reasons behind management and breeding decisions that are made on these farms, to come to the performance they have. Some participants were as eager to learn, that they converted all kind of data to make correct comparisons to their own situations at home. Hereby a short impression:



Above: **Rosy-Lane Holstein farm**. A farm with a clear focus on efficiency and animal health. They haven't used any antibiotics on their lactating cows for over 5 years! Breeding is specifically on NM\$ (Net Merit \$); smaller to medium sized strong trouble free cows, that produce at least 1,7 pounds milk out of every 1 pound of dry matter intake, stay healthy and fertile. This is achieved by: well trained people, good management (protocols), fresh air and sand bedding in stalls, consequent breeding decisions and a lot of attention to transition, calving and raising calves.



Above: Group photo at the impressive and well managed **Shiloh dairy**. They milk mostly Holsteins, but also a group of Brown Swiss cows, and are the breeder of the heavily used proven bull 'Shiloh Brookings Cadence', (photo right his dam).

Below: **Ever-Green-View** farm, where on a tie-stall world records for production are established, due to a combination of top genetics and exceptional feeding. Owner, Tom Kestel (right on photo) has its own unique and fascinating view and way of working and had pleasure in sharing this.



At **Fustead Holsteins** breeding great dairy cows is their passion, but they are also looking for an economical cow. Photo left is a Montross daughter, 3rd lact., scoring EX 90. Right: a Yoder daughter in 2nd lact., peaks at 200 pounds (90 kg.) milk p/day, by 3 times milking.



At **Selz-Pralle Holsteins** is also a world record cow for milk production. Currently dry (photo right), Selz-Pralle Aftershock 3918: at age 5.11 in 365 days she produced 35.489 kg. with 1.405 kg fat and 1.086 kg protein (true). Her lifetime production is now: 138.000 kg.



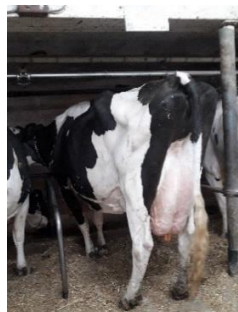
Below: At **Hendel farm** good breeding and management are combined in an exceptional way! This results in a daily average production of over 40 kg. with 2 times milking. With great attention the group listened to the informative explanation and had their questions answered. Left: group in barn, right: just fresh 3rd lactation Reflector daughter.



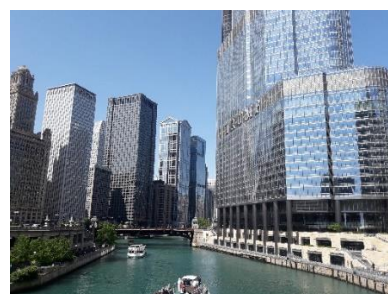
Below: During our facility tour at the headquarters of **ABS-global** in Deforest, a nice historic overview was presented about the development of artificial insemination and all related techniques developed over time were mentioned, so that as users of frozen semen we have a better understanding of the processing of bull semen. Photo left: all bulls from ABS who have produced over 1 million straws in their lifetime. Right: impression of the good herd of Brown Swiss cows they milk at **Voegeli farm**, where they select and feed for high protein%, for the production of Swiss Yoghurt and cheese. The Voegeli herd produces very high components.



Below: At **Jeffrey-Way Holsteins** the Hendrickson family milks about a 100 Holsteins, with great passion for good type and longevity. The average classification score at the moment is excellent 90.2! Over 90% of the herd traces back to just one cow, born in 1978; Inwood Taffy Apollo. Photo in middel: Jeffrey-way Taleea EX 94, sired by Talent RC, who is at high age but still very vital and going strong. Her lifetime production so far: 2775 days 121.076 kg. with 3.8 fat en 3.5 protein (true)!



We have ended our tour through the states of Wisconsin, a small part of Minnesota and Illinois back in Chicago. There we visited downtown to make a nice river cruise, to see the very impressive buildings in the business center of the city Chicago.



Would you like to join a next time? Les us know. Kind regards, Huub Peek, tel. +31 6 26 098 998.